



Customer Service App

SCAN QR CODE TO
DOWNLOAD OUR APP



PLAY STORE



APP STORE



AMAR INTELLIGENT
CLOUD SERVICE

MANUFACTURING UNIT & CORPORATE OFFICE

AMAR JACQUARD

C7-C8, F11-f12, Hampton Court, Business Park, Near Fortis Hospital, Chandigarh Road, Ludhiana - 141012, Punjab India.

Mobile: +91-98150-00512, 98157-00577

Website: www.amarjacquard.com

For Sales : +91-98150-00512, 98157-00577

info@amarjacquard.com, sales@amarjacquard.com

Service Helpline : +91-99887-32240, 82838-14771

service@amarjacquard.com, info@amarjacquard.com

BRANCH OFFICE

SRINAGAR (J&K)

Hawal, Rangamasjid, Near White House, Srinagar.

VARANASI (U.P.)

J. 13/93-Y, Cotton Mill Compound Chankaghat, Varanasi

SURAT (GUJRAT)

Laxmi villa Township, CF-10, E-Building, Road No.9, B/H, GIDC SACHIN, Surat.

BANGALORE(KARNATAKA)

Chaitanya nagar, Near Dathathreya, Kalyana mantapa, Doddaballapuram, Bangalore, Karnataka - 561203.

WEST BENGAL (KOLKATA)

Bag Debipur Santipur, Nadia.Kolkata

BELGAUM (KARNATAKA)

Near Industrial Co-op. Bank, Basveshwar Circle, Khasbag, Belgaum.

BANGLORE (KARNATAKA)

#36/1 Siddanna Lane, Cubbonpet Bengaluru-560002

HINDUPUR, ANANTHA PURA (ANDRA PRADESH)

M.r Palli, Hindupura, Anantha Pura, Andra Pradesh - 515201.

SALEM (TAMILNADU)

Madathur Bus Stop, Ellampillai, Road, Sankari (T.K) Salem (D.T) Tamilnadu-637502

INTERNATIONAL BRANCH OFFICE

BANGLADESH (SIRAJGANJ)

Nur Islam House, 1st Floor, Shernagar, Belkuchi,sirganj (bangladesh).

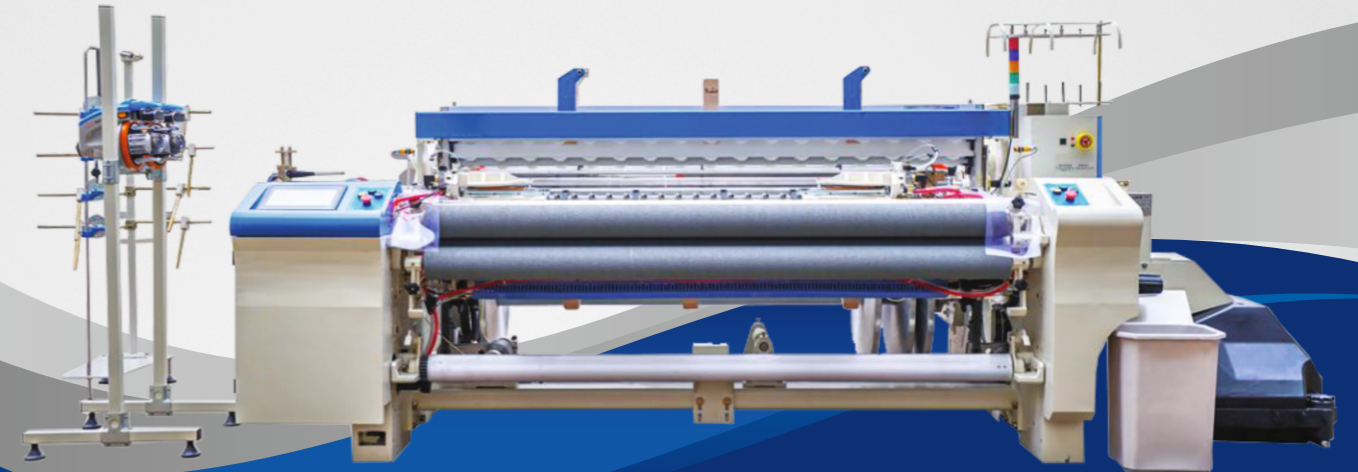
NEPAL

Jorpati, Kathmandu (Nepal)

South America (Bolivia)

58, Villa Avaroa, Street 139N, El Alto, LaPaz, Bolivia

focused **Quality**
Excellent **Results**



AMAR

AIRJET LOOM

Product Range

Airjet loom (1000Rpm) | Name writer Jacquard | High speed rapier loom (cam type)

High speed electronic Jacquard (For Airjet, Waterjet, Rapier Loom, Shuttle loom & Handloom) | Shuttle less rapier loom (Crank type) | Tuck-in device

Follow us on :



www.amarjacquard.com

AMAR COMPANY INTRODUCTION



AIR - JET LOOM

- ▶▶ With the Rapid Development of the Indian Textile Market, Higher Demands have been Placed on Air Jet Looms for "high Speed, Convenience and High Quality".
- ▶▶ In order to meet the needs of the new market, AMAR LOOM has launched the "9100" series of high speed heavy-duty air jet looms, which have been meticulously studied in various details, including appearance design, frame structure, shedding, weft insertion, beating, let-off, take-up, and so on. It also draws on the essence of Japanese air jet loom design and applies the design concept of electromechanical integration and modern industry to further meet customers' demand for synthetic fibre, cotton, wool and other fabrics.



FEATURE 1 HIGH SPEED

- ▶▶ The independently designed and developed robust frame achieves lower vibration during high-speed machine operation, suitable for the production of various density fabrics.
- ▶▶ A new type of beat-up mechanism with good balance.
- ▶▶ Advanced high-speed multi CPU control system, closely cooperating with electronic control manufacturers, continuously improving the performance of electronic control systems.

FEATURE 2 ENERGY SAVING

- ▶▶ A new type of weft insertion system, with its own patent, perfectly matches the main nozzle, auxiliary nozzle, reed, pressure regulating valve, solenoid valve, etc.
- ▶▶ Thus achieving the goal of high efficiency and energy conservation. The electricity bills saved are the profits of the weaving factory.

FEATURE 3 INTELLIGENCE

- ▶▶ Multifunctional display screen is more intuitive and easy to operate.
- ▶▶ The Internet and new communication technologies have achieved high intelligence of the entire machine.
- ▶▶ Based on ergonomic design, it is easier for manual operation.

- ▶▶ Leader in High-speed and Energy - Saving Air Jet Looms.

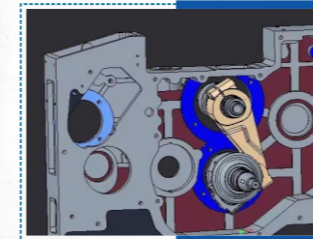


- ▶▶ In-House CNC Machines Setup



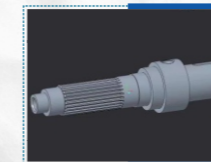
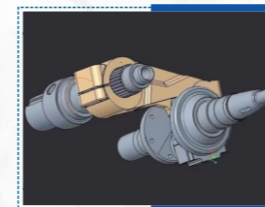
HIGH SPEED AND LOW VIBRATION TECHNOLOGY ARE ADOPTED TO ACHIEVE STABLE OPERATION

- ▶▶ Strengthen the gear connection, improve reliability by strengthening the gear connection part, and ensure the quality of all imported gears.



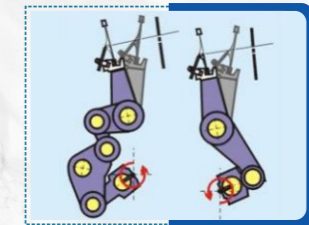
- ▶▶ Integrated wall panels - the foundation for stable operation of high rigidity integrated wall panels.

- ▶▶ New type of weft beating mechanism, reinforced connecting rod, ensuring stable weft beating strength.
- ▶▶ Balancing achieves the effect of reducing vibration by increasing the balance ratio.



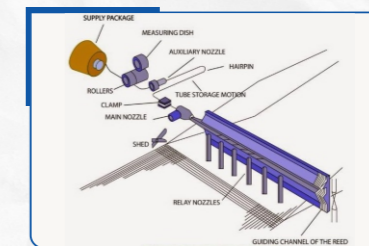
- ▶▶ A new type of connecting shaft reduces vibration by increasing rigidity.

- ▶▶ 6-link beater, suitable for stable operation of wide machine.
- ▶▶ 4-link weft beating, suitable for highspeed operation of narrow machines.



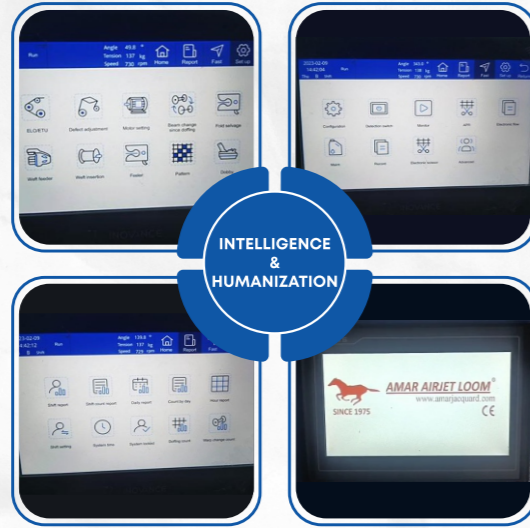
- ▶▶ ELO & ETU

ENERGY SAVING



- ▶▶ Main nozzle & Tandem auxiliary nozzle.
- ▶▶ Further reduce the main injection pressure to 2kg.
- ▶▶ New auxiliary nozzle : The most suitable conical opening angle makes the weft yarn flight more stable in low-pressure environments.

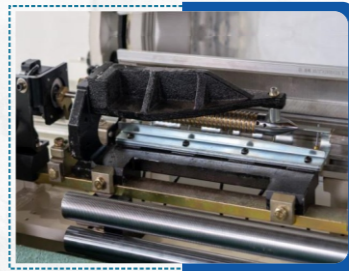
- ▶▶ New energy-saving steel reed : achieving stable weft insertion under low pressure conditions.
- ▶▶ New high-efficiency solenoid valve, imported from Japan with original SMC.
- ▶▶ New type of reed front stretching nozzle, more suitable for weaving chemical fiber fabrics.
- ▶▶ Only **AMAR LOOM** technicians can adjust the nozzle, solenoid valve and reed to the optimal energy-saving state.



- ▶▶ The human-machine interface is friendly, easy to operate and can convert multiple languages.
- ▶▶ Parameter setting function: Set the functional and process parameters of the loom, visualize the operation and make parameter setting more convenient.
- ▶▶ Operation status monitoring: Automatically display operation information (loom speed, loom angle, warp tension, etc.), fabric drop and axis information and shift information, making the working status of the loom clear at a glance.
- ▶▶ Shutdown reason display: When the loom stops due to a malfunction, the self diagnosis function can display the location and cause of the malfunction in detail, making maintenance and repair very convenient.
- ▶▶ Production management function: providing production reports, efficiency reports, downtime reports, cloth drop reports and other production management content.
- ▶▶ Parameter storage function: The system has designed a large capacity storage USB flash drive to copy, backup, and transfer the functional and process parameters of the loom, making the management of loom parameters more convenient.



TUCK-IN DEVICE



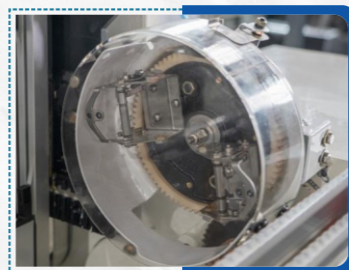
TEMPLE



ELECTRIC CUTTER



POSITIVE LET-OFF SYSTEM



LENO DEVICE



LUBRICATION PUMP

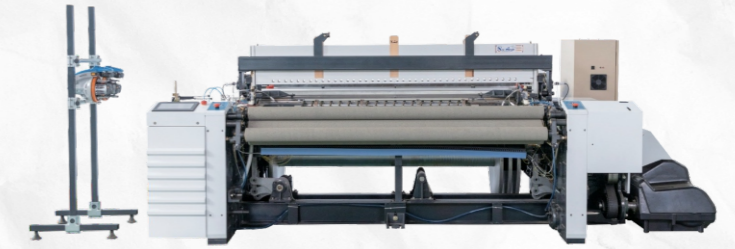
WEAVING MACHINE

Energy saving leader **AMAR AIRJET LOOM** Textile Machine Manufacturer

01 AMAR AIRJET LOOM-9100

Usage scope

- ▶▶ It can make rayon fabric, home textile fabric, canvas, tooling cloth fabric.



Features

- 01 It is same with ZAX9100 structure.
- 02 Max speed can be 800-1000 R.P.M.
- 03 Electric scissors device.
- 04 Individual inverter system.

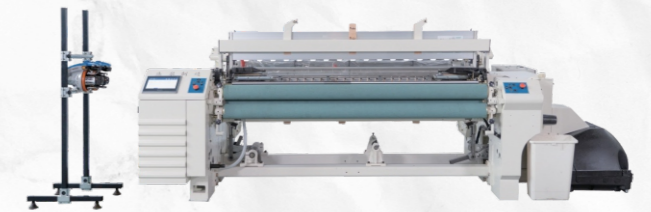
Reed width (cm)	190cm, 210cm, 230cm, 260cm, 280cm, 300cm, 340cm, 360cm
Shedding motion (Brand is up to customer)	Tapped shedding (Max 6pcs heald frame) Cam shedding (Max 10pcs heald frame) Dobby shedding (Max 16pcs heald frame) Electronic jacquard (No heald frame)
Heald frame	New light brand, 6-16pcs / loom
Weft feeder	IRO brand or sanling brand
Nozzle	2 nozzle / 4 nozzle / 6 nozzle
Speed R.P.M	500-1000 (Depends on working width and shedding motion)
Warp beam	Dia. 800mm / 1000mm
Cloth roller	Wind on loom / Wind on batching motion

02 AMAR AIRJET LOOM-810

MOST POPULAR

Usage scope

- ▶▶ Rayon fabric construction: 30s x 30s 68x66 / 45s x 45s 100x80.
- ▶▶ Calico / Poplin / Satin fabric, Polyester cloth.



Features

- 01 Low air consumption 40s*40s, 68*66 at 750 R.P.M. efficiency 99% air flow 0.61cm.
- 02 Positive let-off system, less warp stop.
- 03 Electric scissors device.
- 04 Individual inverter system.
- 05 Positive let-off system.

Reed width (cm)	190cm, 210cm, 230cm, 260cm, 280cm, 300cm, 340cm, 360cm
Shedding motion	Tapped shedding (Max 6pcs heald frame) Cam shedding (Max 10pcs heald frame), Bintian
Heald frame	New light, Japan
Weft feeder	Sanling brand
Nozzle	Jiete brand, 2 nozzle
Speed R.P.M	400-700 (Depends on working width and shedding motion)
Warp beam	Dia. 800mm / 1000mm
Cloth roller	Wind on loom / Wind on batching motion

COMPANY ADVANTAGES

Technique Team :

20 years of experience in air jet loom design and R&D, master the most advanced technology and drawings in Taiwan, and keep improving.

Sales Team :

15 years of experience, proficient in the structure and use of textile machinery, as well as the selection and use of equipment before and after, know the needs of customers and the market, communicate accurately and reduce communication Costs.

Sales service team :

Fast installation and debugging, skilled and trained service team help the customers to better use the machine.

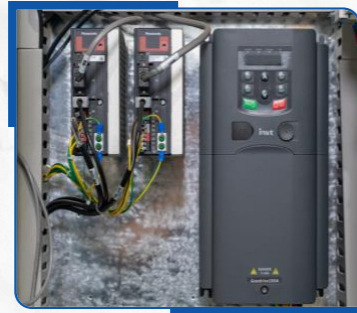
Spare parts order :

The customer purchases parts in the later stage, which is fast, low cost and also in long term parts delivery, without stopping production.

Management & QC :

We produce accessories and assemble machines in strict accordance with the contract requirements and quality standards. The process is standardized. The overall quality of our employees is high. Everyone is a quality administrator, providing customers with the best quality machines.

AMAR AIRJET LOOM-9100



ADVANTAGES

- ▶▶ Integrated wallboard, more suitable for high-speed machines.
- ▶▶ 800-1000 RPM.
- ▶▶ The weighted rear beam structure is more suitable for heavy fabrics.
- ▶▶ Individual inverter system, easily set different speeds.
- ▶▶ Electric cutter, more long life than mechanical cutter.
- ▶▶ All imported accessories shall be authentic.
- ▶▶ Energy saving 8% - 10% compare with other manufacturer.

Item		Specification
Reed width	Nominal cm	150 170 190 210 230 260 280 340 360
	Useful	Reduce 0-60cm (150-260) reduce 0-80cm (280-360)
Weaving Range	Spun fiber	Viscouse, cotton, blended yarn
	Filament	FTY, DTY, Mono polyester
Weft selection		1, 2, 4, 6 color
Motor	Start mode	Start motor at high speed Push-button start, stop or slow move
	Power kw	2.2 2.8 3.0 3.8 4.5
Weft insertion	Method	Main nozzle+swing nozzle+sub nozzle+E-reed
	Control	Original SMC computer program control
	Solenoid valve for sub-nozzle	Original SMC
	Measuring weft storage	Electric control loop separate weft storage
Beating	Beating-up motion	Double side gear box oil bath type 4-link beating-up motion
		Multi-steysword solid beating-up warp and weft system
		Multi-supporting base, balance weight
Shedding	According the weave construction to choose the suitable shedding type	Crank type plain shedding
		Down positive cam shedding
		Dobby shedding
		Electronic jacquard shedding
Let-off	Electronic type	Single warp beam / double warp beam
		Twin rear beam
		Positive / Negative let-off system
	Warp beam flang dia.	800mm/914mm/1000mm
	Winding method	Wind on loom, max dia.680mm
		Wind out of loom, max dia.1200mm
	Temple	Lower or upper
Selvedge		Leno yarn by planecetary gear
		Tuck-in device(L+R) or (L+M+R)
Lubrication		For main driving parts : oil bath, other parts centralized filling oil (Greese)
Stop device	Weft breakage	Double weft feeler
	Warp breakage	Electric warp stop motion
	Others	Selvedge, yarn end treatment, end-broken stop motion
	Stop display	Touch screen display, dispily lights
Weft cutter	Many choice for customer	Mechanical / Electronic
Electric control system		Inovance / baina / ROJ / XINLIAO